

ProCloud Security

NG Firewall

Powered by Untangle



Benefits

- Reporting - database-driven reporting instead of static log files
- Application Visibility - control access to applications and bandwidth allotted
- Scalable - scales from SMB to enterprise

Overview

NG Firewall is a comprehensive next-generation firewall and Unified Threat Management (UTM) security solution that is quick to deploy and easy to manage, with an intuitive user interface. It has the flexibility to be deployed as software on third-party hardware, as a virtual machine, or as a turnkey appliance.

NG Firewall is part of ProCloud Subscription Services. Providing powerful reporting and total control over internet traffic, NG Firewall offers the tools necessary to meet the security and compliance needs of today's nimble organization.

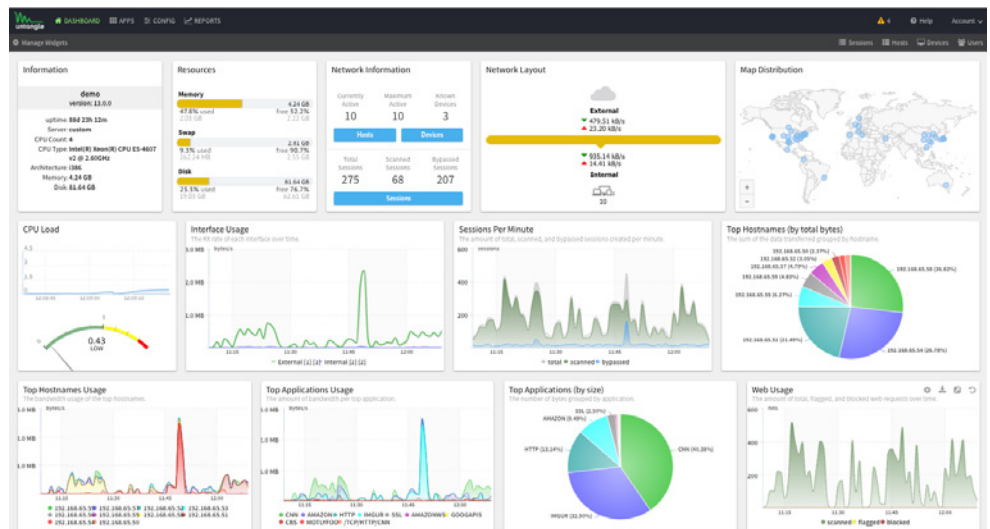


Figure 1: NG Firewall Dashboard

ProCloud Security

Security Applications

The NG Firewall platform is designed to work like an app store. Apps are modules that add functionality to the NG Firewall platform, just like apps on a smartphone. Though each app has a different task, like blocking spam or preventing virus infections, all of the apps work together via NG Firewall's powerful, flexible Integrated Rules Engine™.

This allows you to create granular policies to handle every type of traffic, threat or optimization need regardless of the complexity of your network or business rules. NG Firewall includes on-board reports that let you not only drill down

app-by-app, but across all applications by user, group, time of day and much more. Every dataset available in NG Firewall is available to you via Reports.

All apps are part of the NG Firewall Complete packages available to customers.

NG Firewall Applications	
Feature	Description
Protect	
Firewall	Safeguard your network from the Internet, providing control by IP address, protocol, and port.
Intrusion Prevention	Stop exploits before they enter the network.
Phish Blocker	Protect users from identity theft attempts.
Virus Blocker	Block viruses at the gateway before they reach the computer.
Filter	
Ad Blocker	Eliminates ad and cookie tracking, while improving Web page load times.
Application Control	Control access to applications which can be productivity drains and bandwidth hogs.
Spam Blocker	Block 99.5% of all spam.
SSL Inspector	Decrypt, process, and re-encrypt HTTPS and SMTP traffic on the fly.
Web Filter	Block inappropriate content at the gateway before it reaches the browser.
Perform	
Bandwidth Control	Manage the priority of business-critical over recreational traffic.
WAN Balancer	Distribute Internet traffic to optimize Quality of Service over two or more connections.
WAN Failover	Reroute traffic automatically when one Internet connection fails.
Web Cache	Streamline and accelerate Internet browsing experience.
Connect	
Captive Portal	Easily manage guest access to the Internet.
IPsec VPN	Securely connect multiple sites.
OpenVPN	Site-to-site and client-to-site connections for remote employees.
Tunnel VPN	Provides connectivity through encrypted tunnels to remote VPN servers and services.
Manage	
Directory Connector	Used with Microsoft Active Directory or RADIUS for policy management.
Policy Manager	Define and manage network privileges based on username, groups, time, day, or protocol.
Reports	Drill down into any app or across apps by user, group, time and more.
Tools	
Branding Manager	Personalize user-facing screens to add company logo, name and contact information.
Live Support	Receive live, US-based technical support.

Appliances

Plug-and-play appliances make deployment easy and seamless. Choose from quiet, small-footprint, desktop models all the way up to 2U rackmount servers suitable for the data center.

	u25	u50	u150	u500	m1500	m3000
Recommended Users	10-25	25-50	50-100	100-500	500-1500	1500-3000
Processor	Intel Atom Dual Core	Intel Atom Dual Core	Intel Pentium Dual Core	Intel Xeon Quad Core	Dual Intel Xeon Quad Core	Dual Intel Xeon Six Core
RAM	2GB	2GB	4GB	16GB	16GB	16GB
Storage	32 GB SSD	320 GB, 7200 RPM	1 TB, 7200 RPM	1 TB, 7200 RPM	1 TB, 7200 RPM	1 TB, 7200 RPM
Ethernet Ports	3 x 1Gb Ethernet	4 x 1Gb Ethernet	6 x 1Gb Ethernet	8 x 1Gb Ethernet	8 x 1Gb Ethernet	8 x 1Gb Ethernet
USB 3.0 Ports	2	2	2	2	2	2
Built-in LCD	No	No	Yes	Yes	No	No
Video Connection	HDMI	VGA	VGA	VGA	VGA	VGA
Dimensions	4.9 x 4.7 x .76	9 x 6.9 x 1.73	17 x 12 x 1.73	17 x 12 x 1.73	17x 23.62 x 3.45	17 x 23.62 x 3.45
Shipping Weight (lbs)	4	6	18	27	53	53
Form Factor	Standalone	Standalone	1U Rackmount	1U Rackmount	2U Rackmount	2U Rackmount
Simultaneous Sessions*	1M	1M	2M	2M	4M	4M
Firewall Throughput*	200 Mbps	400 Mbps	750 Mbps	900 Mbps	1.2 Gbps	2.0 Gbps

* Performance may vary based on actual traffic load, system configuration and apps installed.

Command Center

Included with your subscription, Command Center is cloud-based centralized management that allows you to quickly and simply control your NG Firewall deployments from any browser—without the costly purchase and maintenance headache of an on-premises solution. Command Center enables you to control all of your NG Firewall deployments from a single pane of glass.

- Cloud-based centralized management of all your NG Firewall deployments
- See the status of your sites at a glance—all in one place
- Flexibly manage hundreds of sites—or just a few
- View threat and alert history across sites, or drill down into a specific deployment
- Reduce management overhead and associated costs
- Get valuable auditing logs—key to regulatory compliance
- Manage licensing, software updates, backups and more
- Access to new management features as they become available—at no additional cost

ProCloud Security

Ordering Information

NG Firewall packages scale from under 25 to over 1,000 devices. The packages consist of a monthly recurring charge for the software, as well as the one-time purchase of an appliance which can scale to meet your organization's needs.

Maximum Devices	Software Only / Mo.	U25 Appliance	U50 Appliance	U150 Appliance	U500 Appliance	U1500 Appliance	U3000 Appliance
25	\$45.00	\$399.00	\$899.00				
50	\$90.00	\$399.00	\$899.00				
75	\$112.50		\$899.00	\$1,249.00			
100	\$157.50			\$1,249.00			
150	\$225.00			\$1,249.00			
250	\$270.00			\$1,249.00	\$2,599.00		
500	\$450.00				\$2,599.00	\$6,549.00	
1000	\$675.00				\$2,599.00	\$6,549.00	\$7,599.00
UNLIMITED	\$1,080.00	\$399.00	\$899.00	\$1,249.00	\$2,599.00	\$6,549.00	\$7,599.00



Pulse Supply
 909 Ridgebrook Road., Sparks, Maryland 21152, USA
 TEL : +1-410-583-1701 FAX : +1-410-583-1704



E-mail: sales@pulsesupply.com
<https://www.pulsesupply.com/adtran>

AD10621A

January Copyright © 2018 ADTRAN, Inc. All rights reserved. ADTRAN believes the information in this publication to be accurate as of publication date, and is not responsible for error. Specifications subject to change without notice. ADTRAN and Total Access are registered trademarks of ADTRAN, Inc. and its affiliates in various countries. All other trademarks mentioned in this document are the property of their respective owners.

ADTRAN warranty duration and entitlements vary by product and geography. For specific warranty information, visit www.adtran.com/warranty

ADTRAN products may be subject to U.S. export controls and other trade restrictions. Any export, re-export, or transfer of the products contrary to law is prohibited. For more information regarding exportation of ADTRAN items (e.g. commodities, technology, software), please visit www.adtran.com/exportlicense



ISO 9001
 ISO 14001
 TL 9000



TL19-1270