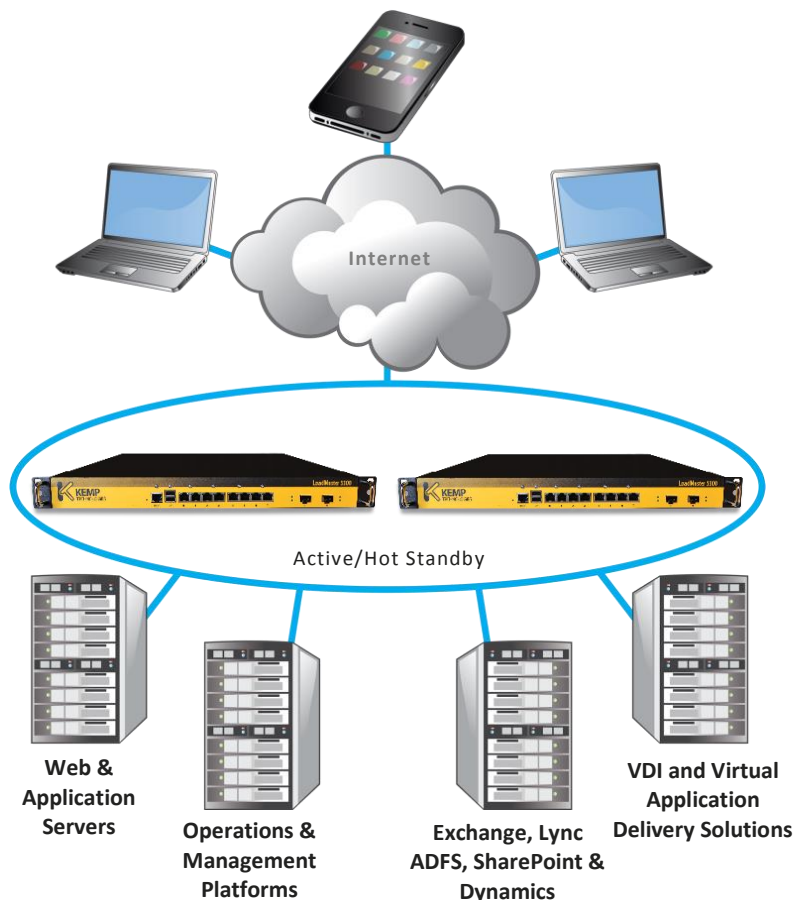


- ◆ Application Delivery Optimization
- ◆ Server Load Balancing
- ◆ SSL Acceleration



#1 Load Balancer
in price/performance



Load balance up to 1,000 servers and 1,000 virtual clusters per LoadMaster™



What is the LoadMaster™ ?

The LoadMaster™ is an **advanced Layer 4-7** load balancing and content switching **application delivery controller**. Integrated ASIC-based SSL Acceleration, advanced software optimization and Enterprise application integration allows the LoadMaster™ to intelligently and efficiently distribute user traffic and make applications perform better.

The LoadMaster™ is an **essential component** to include **for the high availability** of critical application infrastructures in the modern datacenter.

Combining the latest advancements in Layer 4-7 application delivery technology with support for high-performance hardware and virtualization platforms, the **LoadMaster™ is THE load balancer of choice** for providing high availability services in web, application and cloud infrastructures.

Investment Protection	Cost Containment	Ease of Use
<ul style="list-style-type: none"> ▪ A single LoadMaster™ can support up to 1,000 servers, offering scalability for growing environments. ▪ Time-tested software optimized to take advantage of the underlying hardware or hypervisor platform ensures reliability and highly available access to business critical applications. ▪ Advanced Application Delivery and security optimization features like content switching, caching, edge security, data compression, intrusion prevention and SSL acceleration provide all of the functionality needed for the modern application infrastructure. ▪ Native support for Enterprise applications such as Microsoft Exchange, Lync, SharePoint, RDS and the VMware Horizon suite makes LoadMaster™ the load balancer of choice for critical applications. 	<ul style="list-style-type: none"> ▪ With competitive pricing and unbeatable performance to cost ratio, the LoadMaster™ allows for shortened realization of ROI and is a clear leader in the application delivery market. ▪ Comprehensive product maintenance and support included for the first year with every LoadMaster™ lowers the cost of acquisition and TCO. ▪ Key functionality included in every LoadMaster's base price provides the most comprehensive feature set in the industry – further lowering TCO. ▪ With low overhead for training, administration and setup, LoadMaster allows for the quickest time to market for line of business and corporate-wide applications and web services. 	<ul style="list-style-type: none"> ▪ All LoadMasters come with an intuitive and simple to use Web User Interface (WUI) and CLI, enabling administrators to easily configure, maintain and integrate LoadMaster™. ▪ Wizard-driven setup and optimized configuration templates allows LoadMaster™ to be easily deployed in existing traditional datacenter and hybrid cloud infrastructures without the need for complex and time consuming implementation and reconfiguration of the environment. ▪ Secure SSH and HTTPS WUI remote access, real time performance and availability metrics, SNMP support and REST API allows LoadMaster™ and the applications it supports to be easily managed and monitored to ensure the health and performance of the environment.

LoadMaster Model	LM-2400	LM-2600	LM-3600	LM-5400
Pricing (Includes 1st Year Support)*	\$1,990	\$6,990	\$9,890	\$17,990
Specifications				
Max Balancer Throughput	1.2 Gbps	1.7 Gbps	3.4 Gbps	8.8 Gbps
SSL TPS (2K Keys)	200†	1,000	2,500	7,000
SSL TPS (1K Keys)	1,000	2,000	5,000	9,300
Integrated SSL ASIC	N/A	✓	✓	✓
Layer 4 concurrent connections	4,300,000	8,600,000	12,800,000	25,600,000
Max Servers Supported / Virtual Clusters	1000/256	1000/500	1000/1000	1000/1000
Gigabit Ethernet Ports	4	4	8	8
10 Gigabit Fiber Ports (SFP+)	N/A	N/A	N/A	2
TMG Replacement (SSO, Pre-Authentication, Security Logging)	✓	✓	✓	✓
GSLB Multi-Site Load Balancing ‡	✓	✓	✓	✓
Storage Disk	SSD	SSD	SSD	SSD
Redundant Hot-Swap Power Supply	N/A	N/A	N/A	✓
FIPS 140-2, Level 2 HSM	N/A	N/A	N/A	Model Available LM-5305-FIPS
All LoadMasters Feature the Following Key Features and Benefits				
Key Features	Key Supported Applications		Key Supported Microsoft Workloads	
Layer4/7 Load Balancing	VMware Horizon Suite		Exchange 2010 / 2013	
Content Switching	Virtual Desktop Infrastructure		Lync 2010 / 2013	
Caching, compression Engine	CRM Systems		Remote Desktop Services	
MS Exchange 2010/2013 Optimized	Apache Server		Sharepoint	
Pre-configured virtual service templates	Oracle E-Business Suite		Dynamics	
IPS Engine	Oracle WebLogic		Office Web Apps	
High Availability	IBM Websphere		Azure-Hosted Workloads	
TMG Replacement Included	Mobile Device Management		ADFS	
GSLB Multi-Site Load Balancing	Unified Communications		IIS	
RESTful API	Intranet Applications		Custom .Net Applications	
*USD-based MSRP. Includes HW maintenance, 5x10 phone/e-mail support and software updates. Remote deployment, 24x7 and onsite support options available.				
† SSL TPS specification based on maximum licensed value and will vary based on other load balancer functionality being utilized				
‡ Feature supported via an add-on pack. Included standard with the LM-5400.				